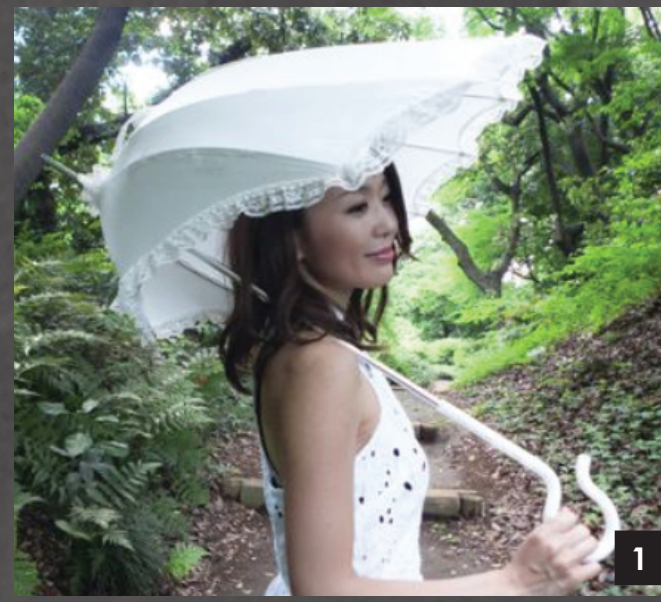


# PARASHELL (PARASOL)

Decorative Arts Class: Fall 2015



1



2



3

Inspired by the idea of a parasol that had unusual spacing between the ribs I did some research and discovered the parashell in a collection sold by a Canadian designer. It is part of a line of sculptural parasols, the one that is shaped like a shell (1). I had a 16 rib parasol frame that I augmented the shape of. A normal parasol has a apex of 22 degrees but I was able to stretch the center back panel to 52 degrees. This meant that the apex of the next ribs could only make 32 degrees. With these measurements I drafted the first mock up (2). Because I had started with triangular pieces the parasol was too flat (3).



4



5



6



7



For the second mock up I changed the degree of curve below where the stretcher bars hit on the ribs. Each panel was different and it caused an extreme curve to the back of the parasol (4). With it open I was able to mark on the mock-up canopy the shell shape I was looking for (5). To make this happen I had to shorten the ribs through the back 1/2 of the canopy with a Dremel. I did have an issue with the extreme curve of the mock-up forcing a bend into the rib that was too extreme and causing it to buckle and bend when it got caught on a rib next to it. I was able to fix this with some JB Weld and a short length of heavy wire to support the weak area (6). I was excited to see that my parasol was looking very shell shaped (7). In the final parasol I used a cotton that was light and evoked summer to me. Seams were French seamed and the edge of the parasol was hemmed before stitching on the rib tips. This parasol took 17 hours to construct.